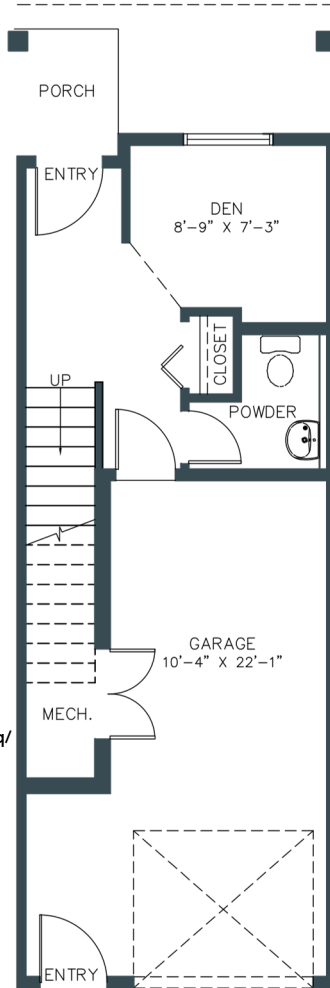


# A1

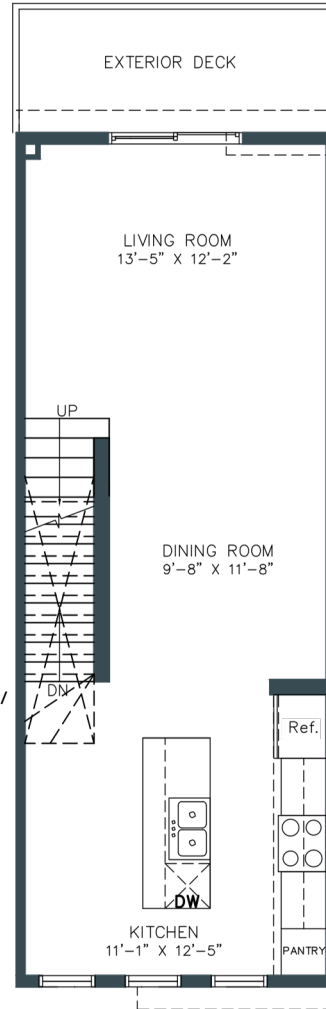
## HERITAGE TOWNHOME

1,263 - 1,289 SQ. FT.  
2 BED | 2.5 BATH & ENSUITE



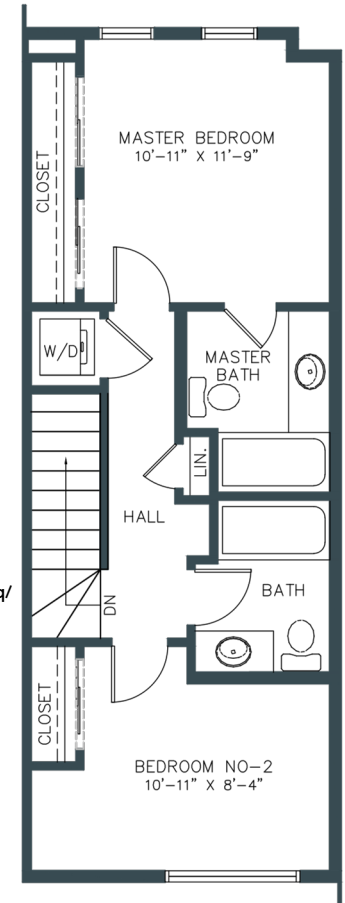
### LOWER/ENTRY

Lower Floor Area: 190-206 sq/  
Garage Area: 262 sq/  
Total Developed Area: 1263-1289 sq/



### SECOND

Second Floor Area: 524-538 sq/



### THIRD

Third Floor Area: 549-563 sq/

Square footage and room dimensions are based on architectural drawings and measurements. Furniture layouts depict standard furnishing sizes. All sizes and dimensions are approximate. Information is deemed accurate, but not guaranteed. Errors and omissions excepted.

rivercrest  
IN COCHRANE

Windows and boxouts may vary.